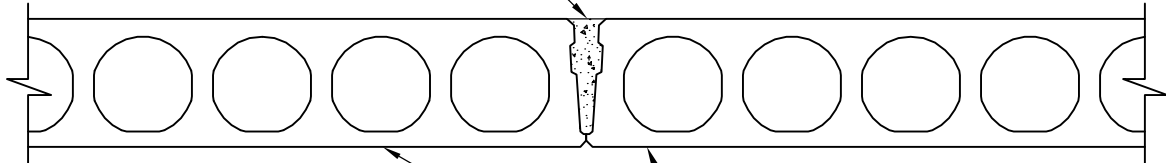


GROUTED JOINT BY SPI



ULTRA DECK PLANK BY SPI

NOTE:

MIN. GROUT STRENGTH TO BE 4000 PSI
 IN 28 DAYS UNLESS NOTED OR SHOWN
 OTHERWISE. IT SHALL BE A MIXTURE OF
 NOT LESS THAN ONE PART PORTLAND
 CEMENT TO THREE PARTS FINE SAND.

PLANK GROUTED JOINT CONNECTION

STANDARD ULTRA DECK HOLLOWCORE PLANK DETAIL

NO	REVISIONS	DATE



STRUCTURAL
 PRESTRESSED
 INDUSTRIES,
 INC.

DRWG. BY: H. PEREZ

DATE: 06-26-09

JOB NO.

STANDARDS

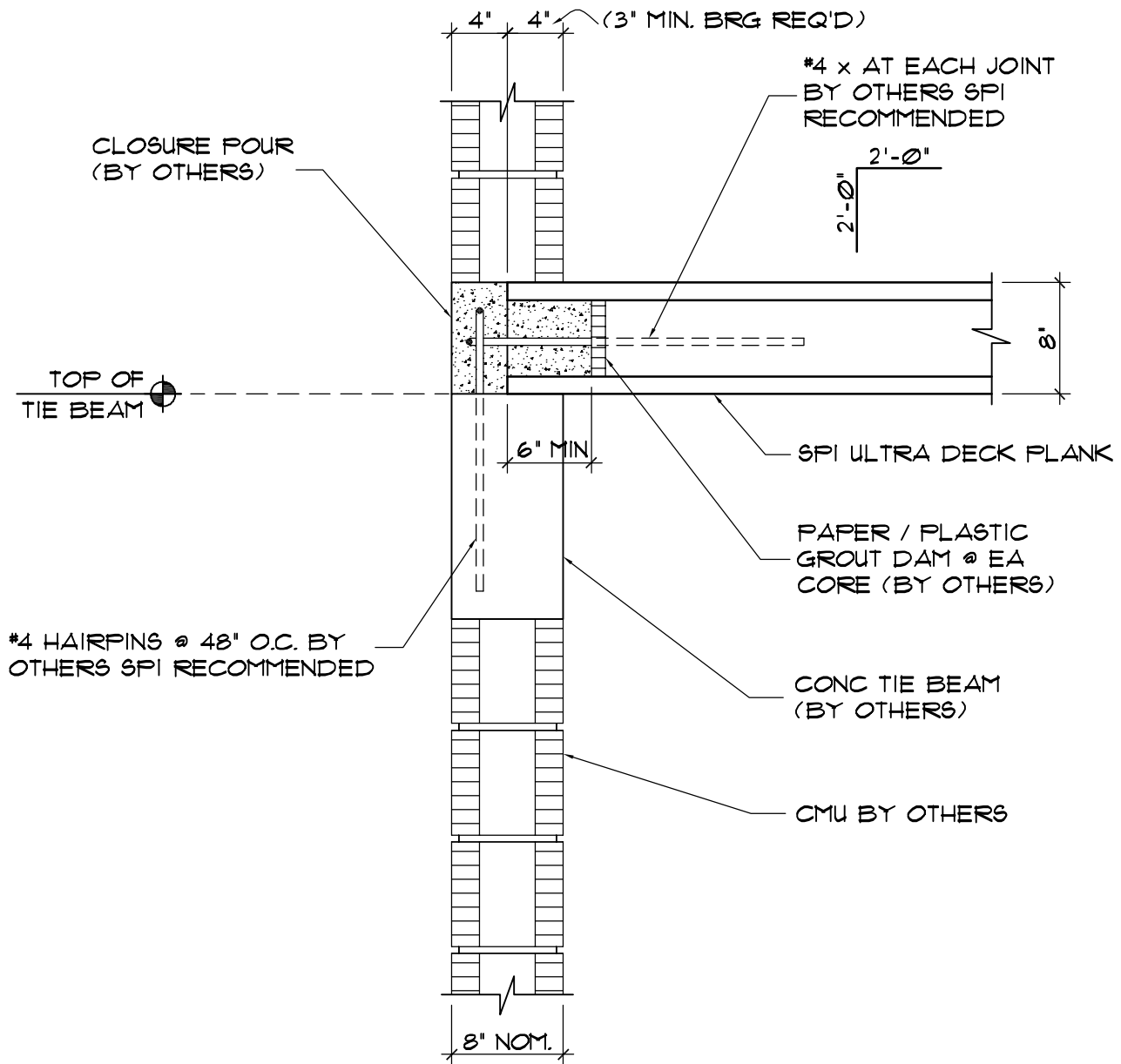
CHK'D. BY: R.H.

DATE: 06-26-09

SHT. NO.

HC-1

ENGINEER OF RECORD
 VERIFY IF ADEQUATE
 FOR DIAPHRAGM



PLANK BEARING ON CIP TIE BEAM

STANDARD ULTRA DECK HOLLOWCORE PLANK DETAIL

NO	REVISIONS	DATE

SPI STRUCTURAL
 PRESTRESSED
 INDUSTRIES,
 INC.

DRWG. BY: H. PEREZ

DATE: 06-26-09

JOB NO.

STANDARDS

CHK'D. BY: R. H.

DATE: 06-26-09

SHT. NO.

HC-2

ENGINEER OF RECORD VERIFY
IF ADEQUATE FOR DIAPHRAGM

SPI RECOMMENDS #4 @
48" O.C. FOR STABILITY

2'-0"
6" 1'-6"

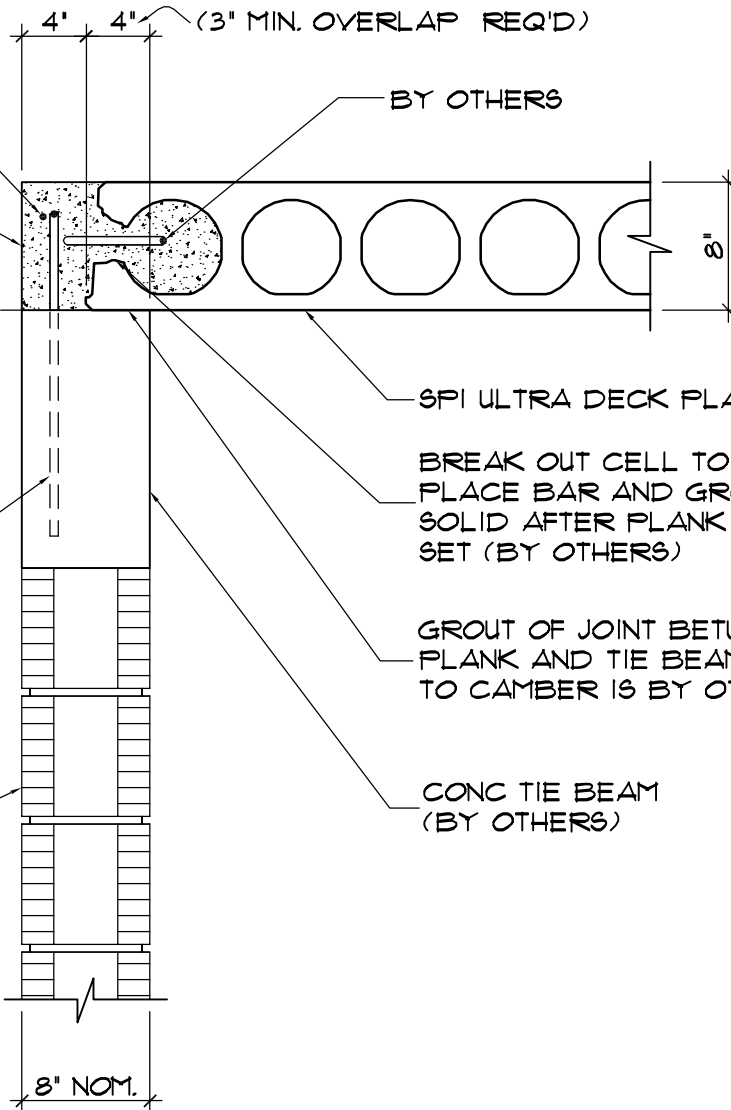
4 x CONT. BY
OTHERS SPI
RECOMMENDED

CLOSURE FOUR
(BY OTHERS)

TOP OF
TIE BEAM

#4 HAIRPINS @ 48"
O.C. BY OTHERS SPI
RECOMMENDED

CMU BY OTHERS



BY OTHERS

SPI ULTRA DECK PLANK

BREAK OUT CELL TO
PLACE BAR AND GROUT
SOLID AFTER PLANK ARE
SET (BY OTHERS)

GROUT OF JOINT BETWEEN
PLANK AND TIE BEAM DUE
TO CAMBER IS BY OTHERS

CONC TIE BEAM
(BY OTHERS)

PLANK PARALLEL TO CIP TIE BEAM WITH REBAR ANCHORAGE

STANDARD ULTRA DECK HOLLOWCORE PLANK DETAIL

NO	REVISIONS	DATE



STRUCTURAL
PRESTRESSED
INDUSTRIES,
INC.

DRWG. BY: H. PEREZ

DATE: 06-26-09

JOB NO.

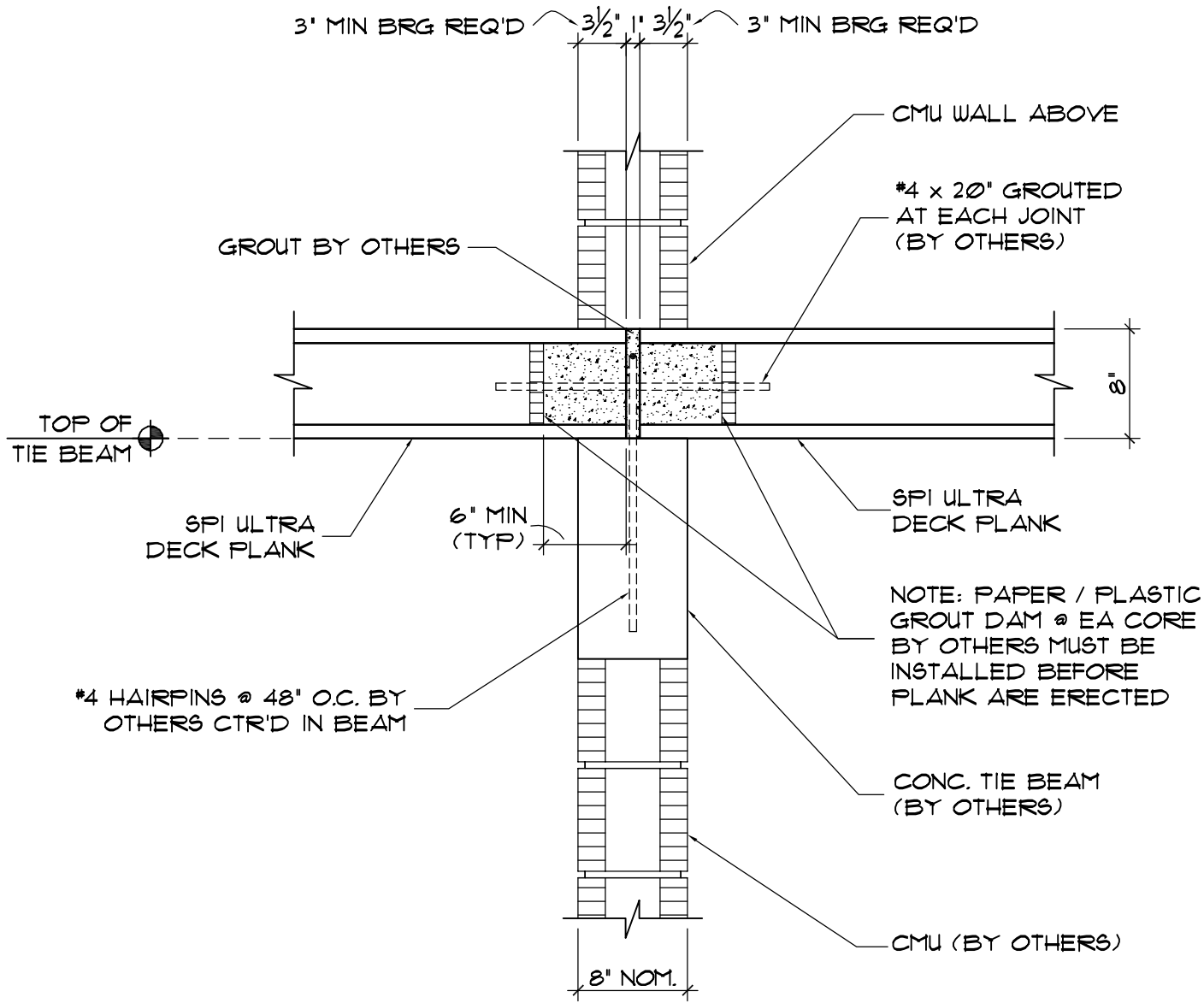
STANDARDS

CHK'D. BY: R. H.

DATE: 06-26-09

SHT. NO.

HC-3



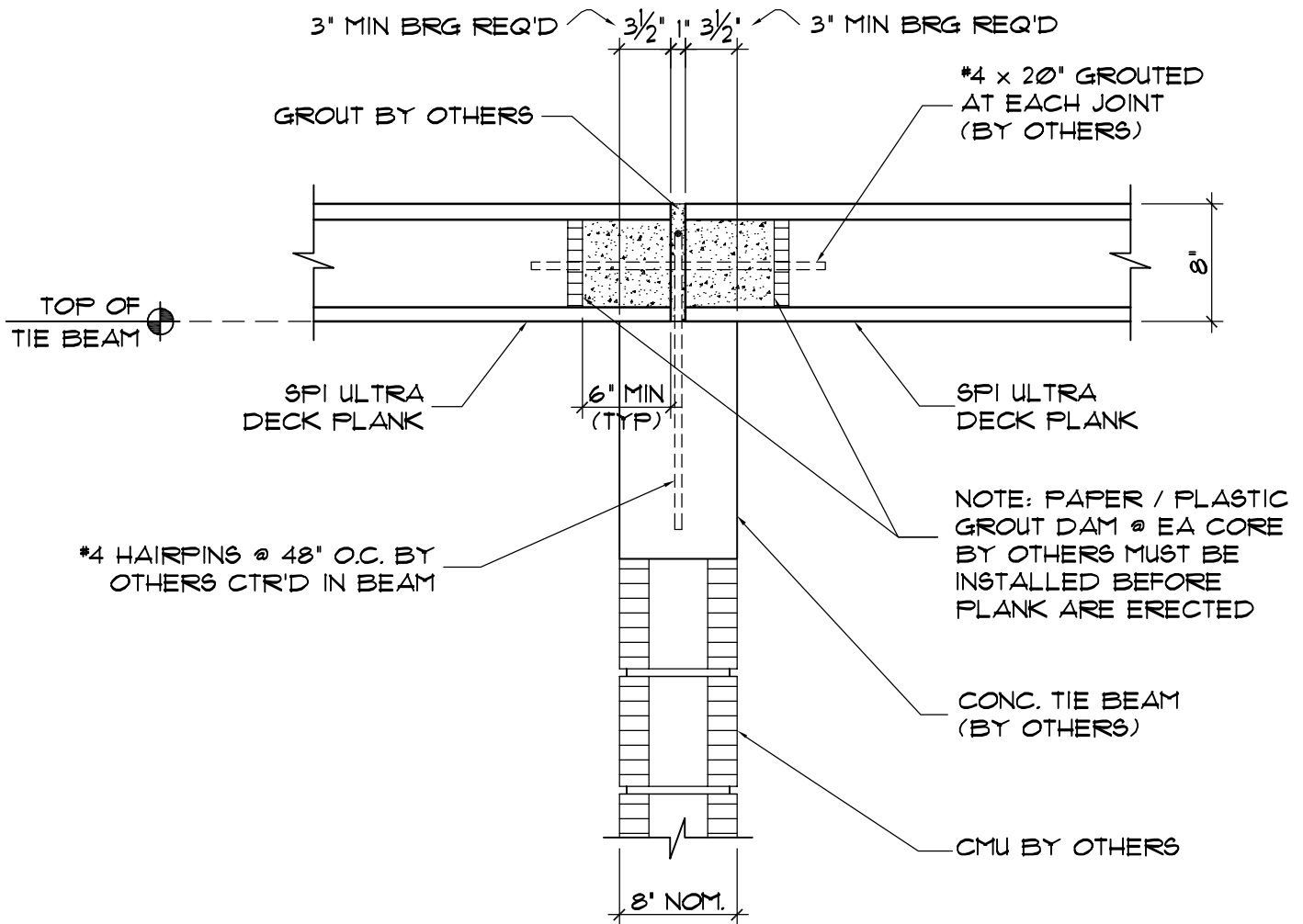
PLANK BEARING EACH SIDE OF INTERIOR TIE BEAM

STANDARD ULTRA DECK HOLLOWCORE PLANK DETAIL

NO	REVISIONS	DATE



DRWG. BY: H. PEREZ	CHK'D. BY: R. H.
DATE: 06-26-09	DATE: 06-26-09
JOB NO. STANDARDS	SHT. NO. HC-4



PLANK BEARING EACH SIDE OF INTERIOR TIE BEAM

STANDARD ULTRA DECK HOLLOWCORE PLANK DETAIL

NO	REVISIONS	DATE



STRUCTURAL
PRESTRESSED
INDUSTRIES,
INC.

DRWG. BY: H. PEREZ

DATE: 06-26-09

JOB NO.

STANDARDS

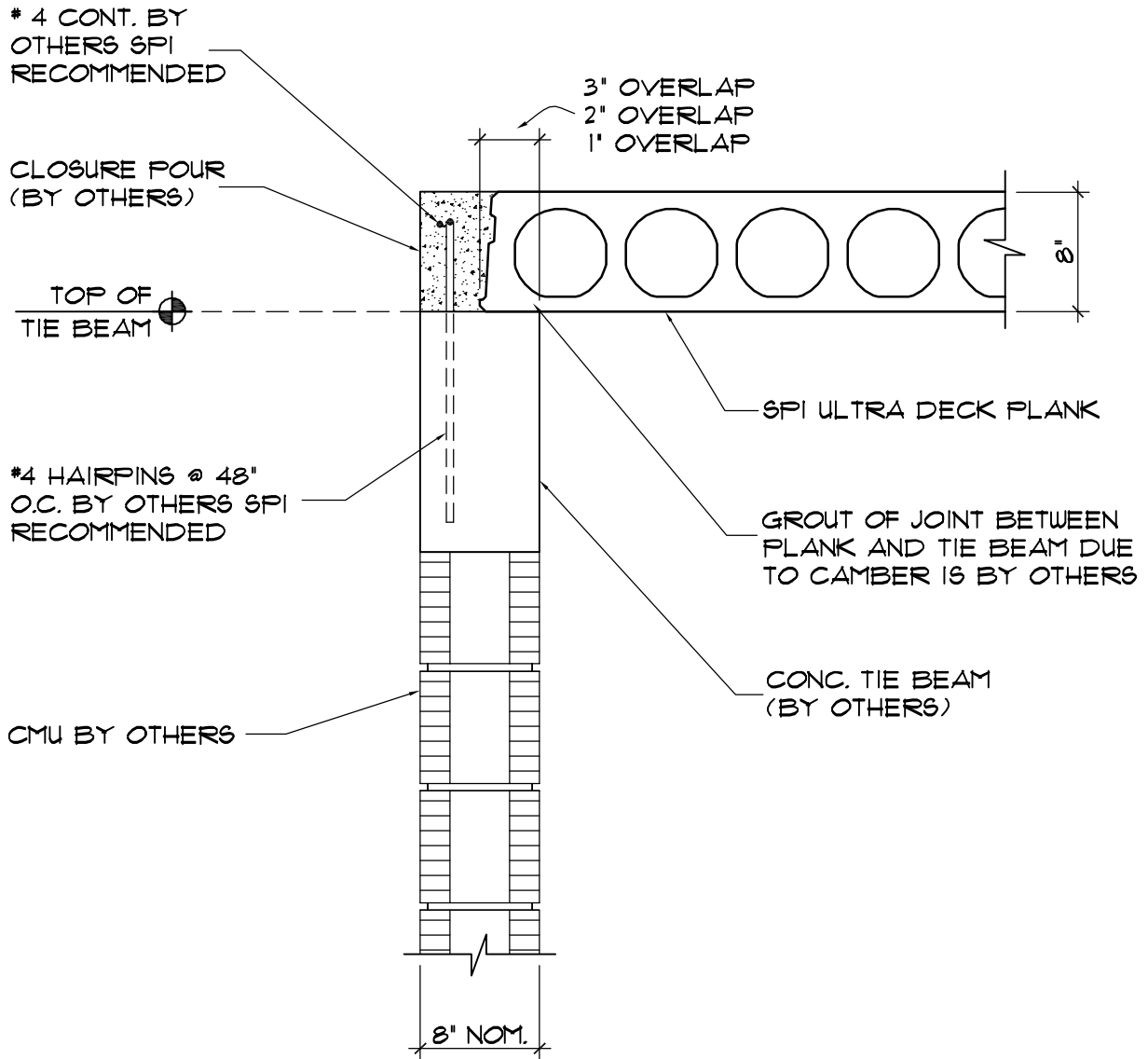
CHK'D. BY: R. H.

DATE: 06-26-09

SHT. NO.

HC-5

ENGINEER OF RECORD VERIFY
IF ADEQUATE FOR DIAPHRAGM



PLANK PARALLEL TO CIP TIE BEAM

STANDARD ULTRA DECK HOLLOWCORE PLANK DETAIL

NO	REVISIONS	DATE



DRWG. BY: H. PEREZ

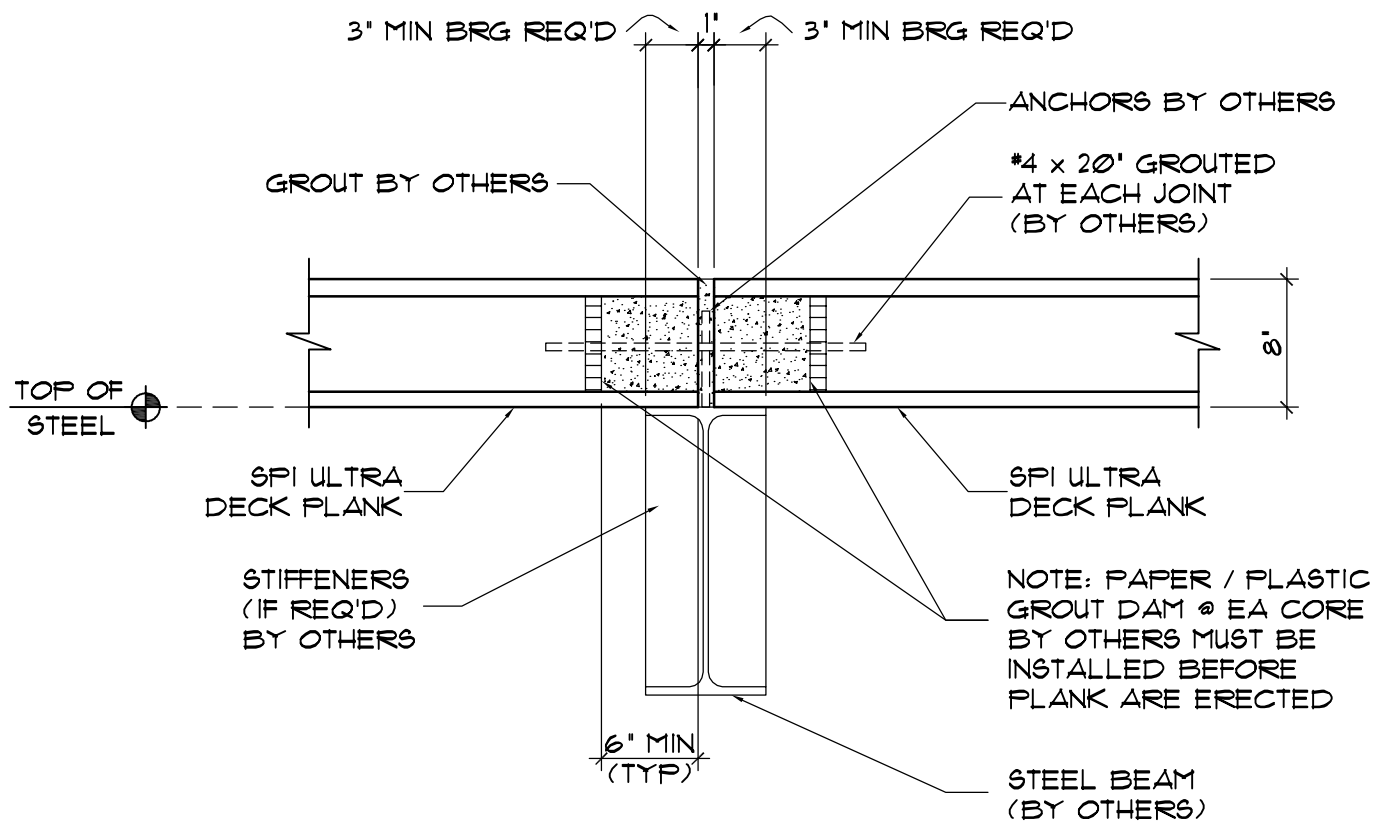
CHK'D. BY: R. H.

DATE: 06-26-09

DATE: 06-26-09

JOB NO.
STANDARDS

SHT. NO.
HC-6



NOTES:

MINIMUM BEARING WIDTH
REQUIRED EACH SIDE = 3"

MINIMUM BEAM FLANGE
WIDTH = 0'-7 1/2" UNLESS
OTHERWISE APPROVED

ALTERNATE: ADD CONTINUOUS
TOP 7 1/2' BEARING PLATE

PLANK BEARING EACH SIDE OF STEEL BEAM

STANDARD ULTRA DECK HOLLOWCORE PLANK DETAIL

NO	REVISIONS	DATE



DRWG. BY: H. PEREZ

CHK'D. BY: R. H.

DATE: 06-26-09

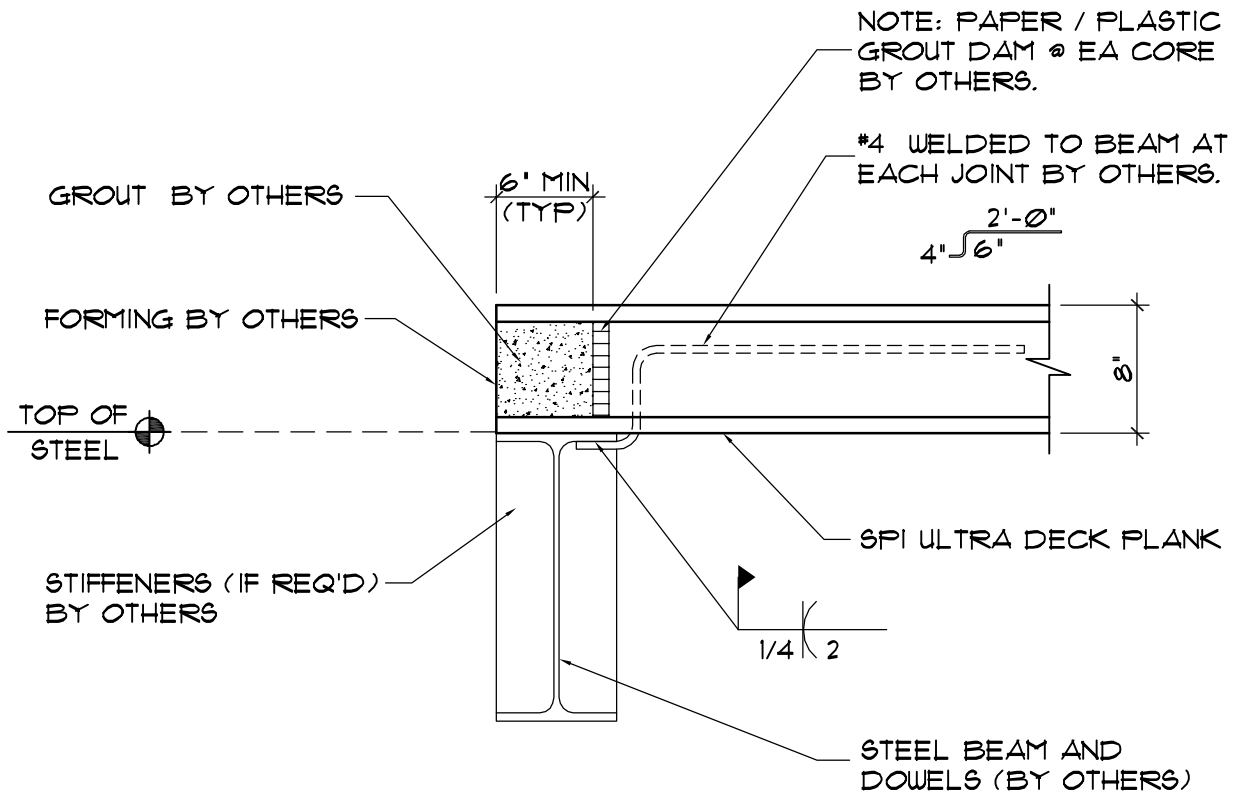
DATE: 06-26-09

JOB NO.

SHT. NO.

STANDARDS

HC-7



PLANK BEARING ONE SIDE OF STEEL BEAM

STANDARD ULTRA DECK HOLLOWCORE PLANK DETAIL

NO	REVISIONS	DATE



STRUCTURAL
PRESTRESSED
INDUSTRIES,
INC.

DRWG. BY: H. PEREZ

DATE: 06-26-09

JOB NO.

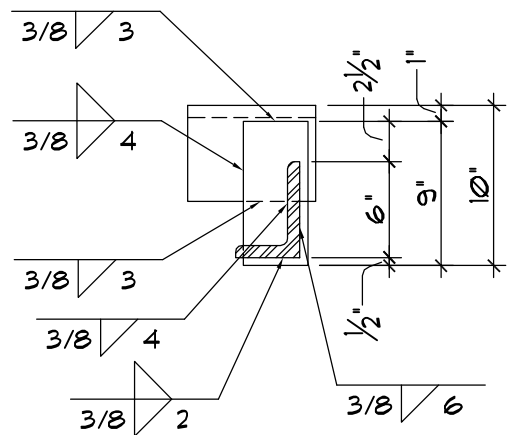
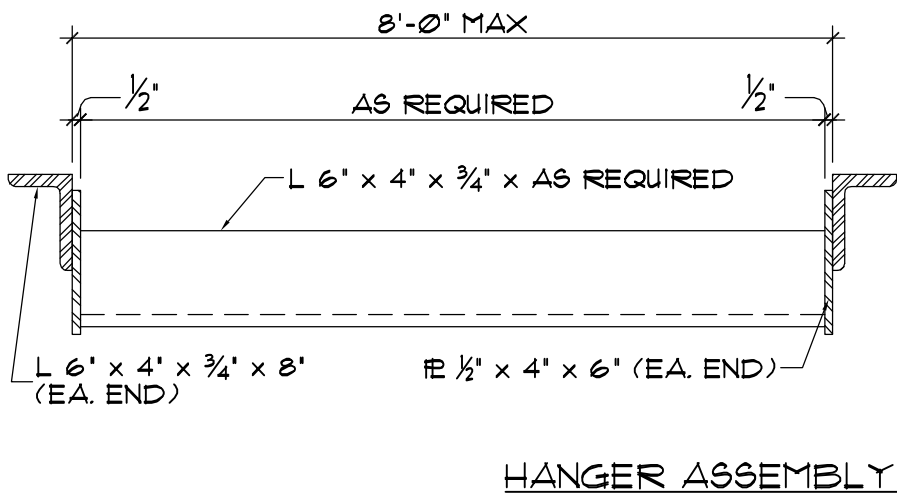
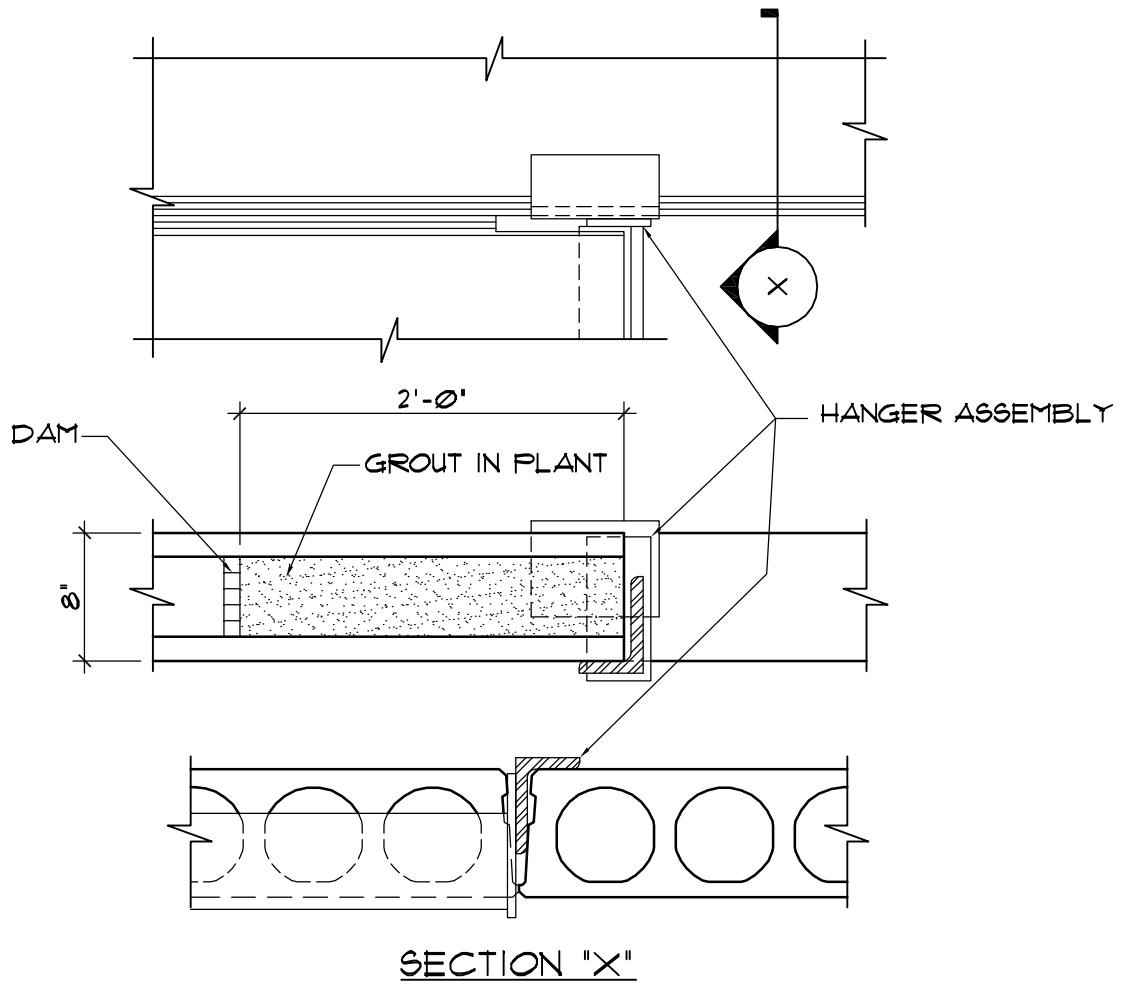
STANDARDS

CHK'D. BY: R. H.

DATE: 06-26-09

SHT. NO.

HC-8



PLANK BEARING ON STEEL HANGER DETAIL

STANDARD ULTRA DECK HOLLOWCORE PLANK DETAIL

NO	REVISIONS	DATE



STRUCTURAL
PRESTRESSED
INDUSTRIES,
INC.

DRWG. BY: H. PEREZ

DATE: 06-26-09

JOB NO.

STANDARDS

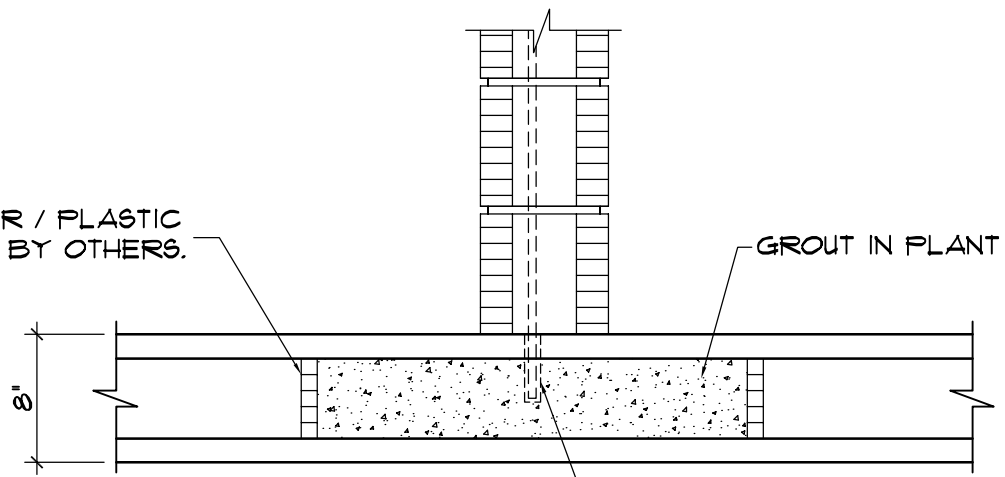
CHK'D. BY: R.H.

DATE: 06-26-09

SHT. NO.

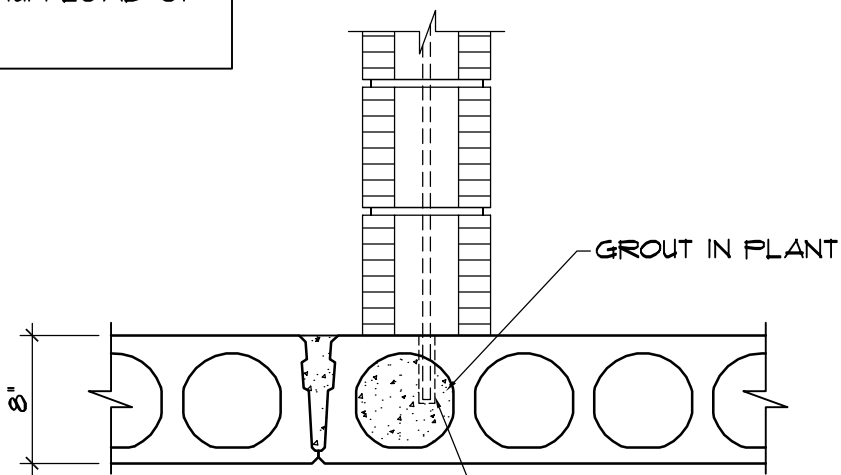
HC-9

NOTE: PAPER / PLASTIC GROUT DAM BY OTHERS.



DRILL INTO SLABS MAX. OF 4" TO EPOXY REBAR SIZE AND SPACING AS REQUIRED. BARS PROVIDED AND PLACED BY OTHERS.

NOTE:
CMU WALL ABOVE SLAB CAN ONLY BE NON-LOAD BEARING WALL WITH MAXIMUM LOAD OF 500 PLF.



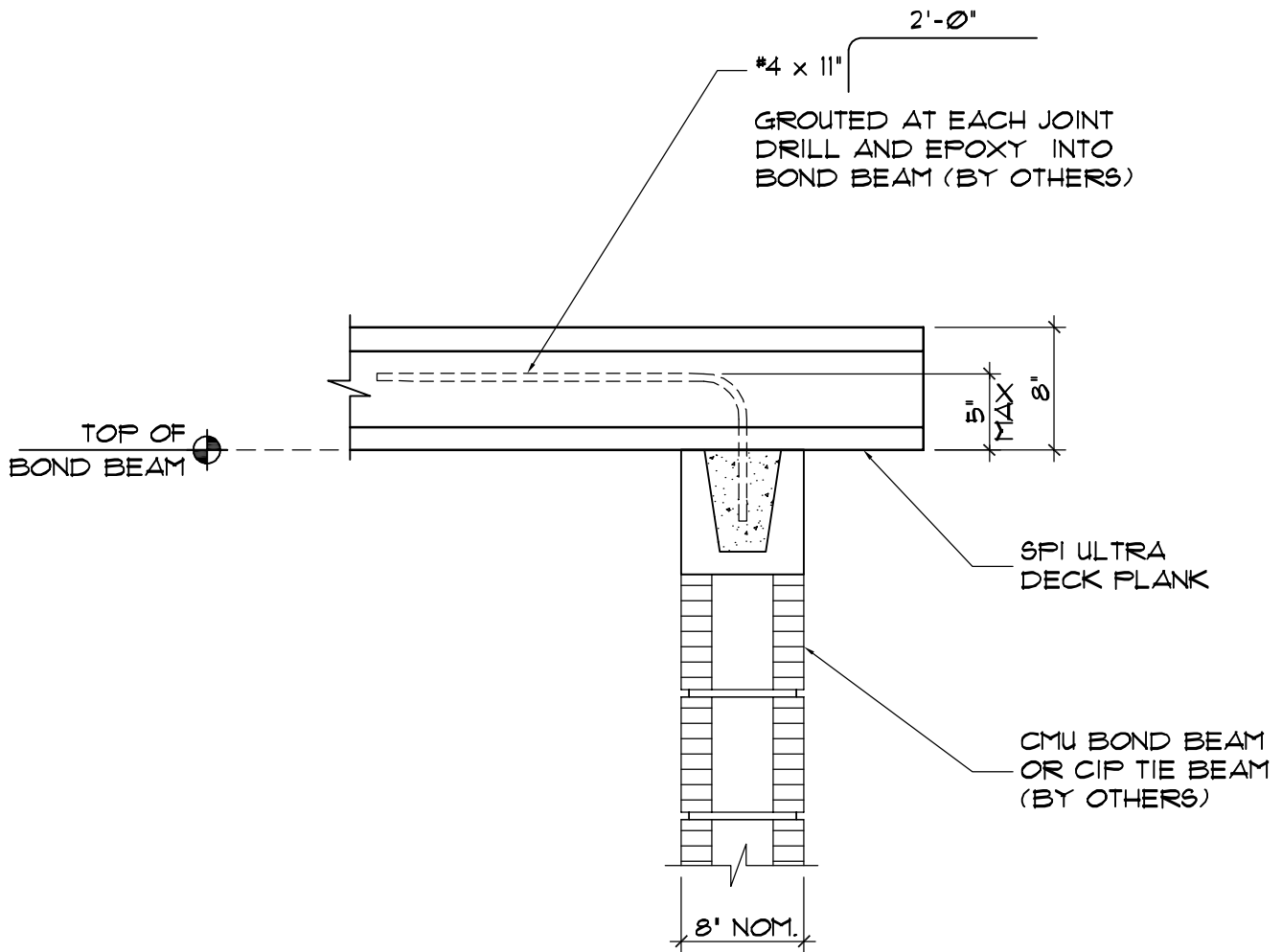
DRILL INTO SLABS MAX. OF 4" TO EPOXY REBAR SIZE AND SPACING AS REQUIRED. BARS PROVIDED AND PLACED BY OTHERS.

NON LOAD BRG CMU ON PLANK WITH DRILLED DOWELS
STANDARD ULTRA DECK HOLLOWCORE PLANK DETAIL

NO	REVISIONS	DATE



DRWG. BY: H. PEREZ	CHK'D. BY: R. H.
DATE: 06-26-09	DATE: 06-26-09
JOB NO. STANDARDS	SHT. NO. HC-10



PLANK CANTILEVER BEARING

STANDARD ULTRA DECK HOLLOWCORE PLANK DETAIL

NO	REVISIONS	DATE



STRUCTURAL
PRESTRESSED
INDUSTRIES,
INC.

DRWG. BY: H. PEREZ

DATE: 06-26-09

JOB NO.

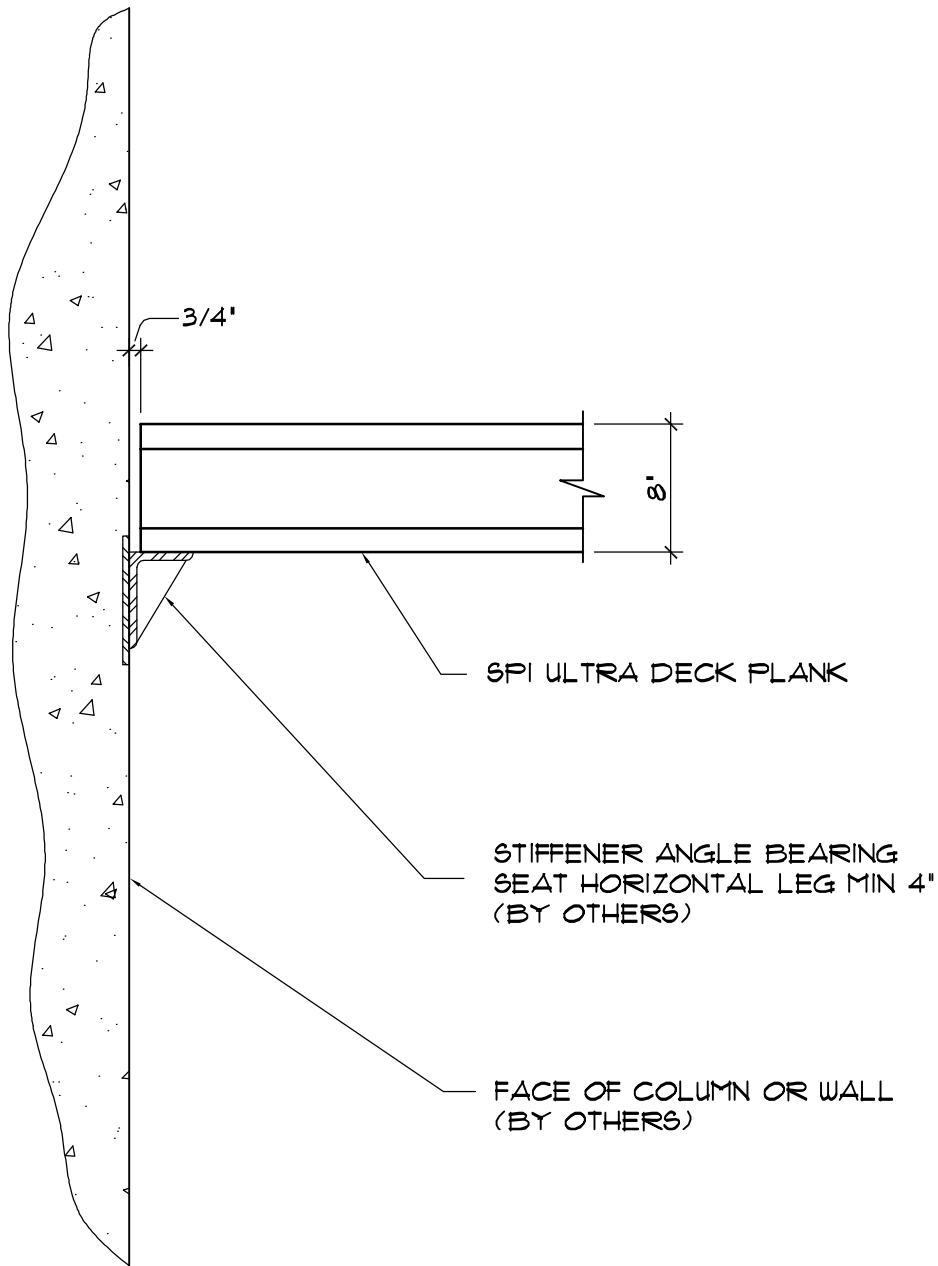
STANDARDS

CHK'D. BY: R. H.

DATE: 06-26-09

SHT. NO.

HC-11



PLANK BEARING @ ANGLE

STANDARD ULTRA DECK HOLLOWCORE PLANK DETAIL

NO	REVISIONS	DATE



STRUCTURAL
PRESTRESSED
INDUSTRIES,
INC.

DRWG. BY: H. PEREZ

DATE: 06-26-09

JOB NO.

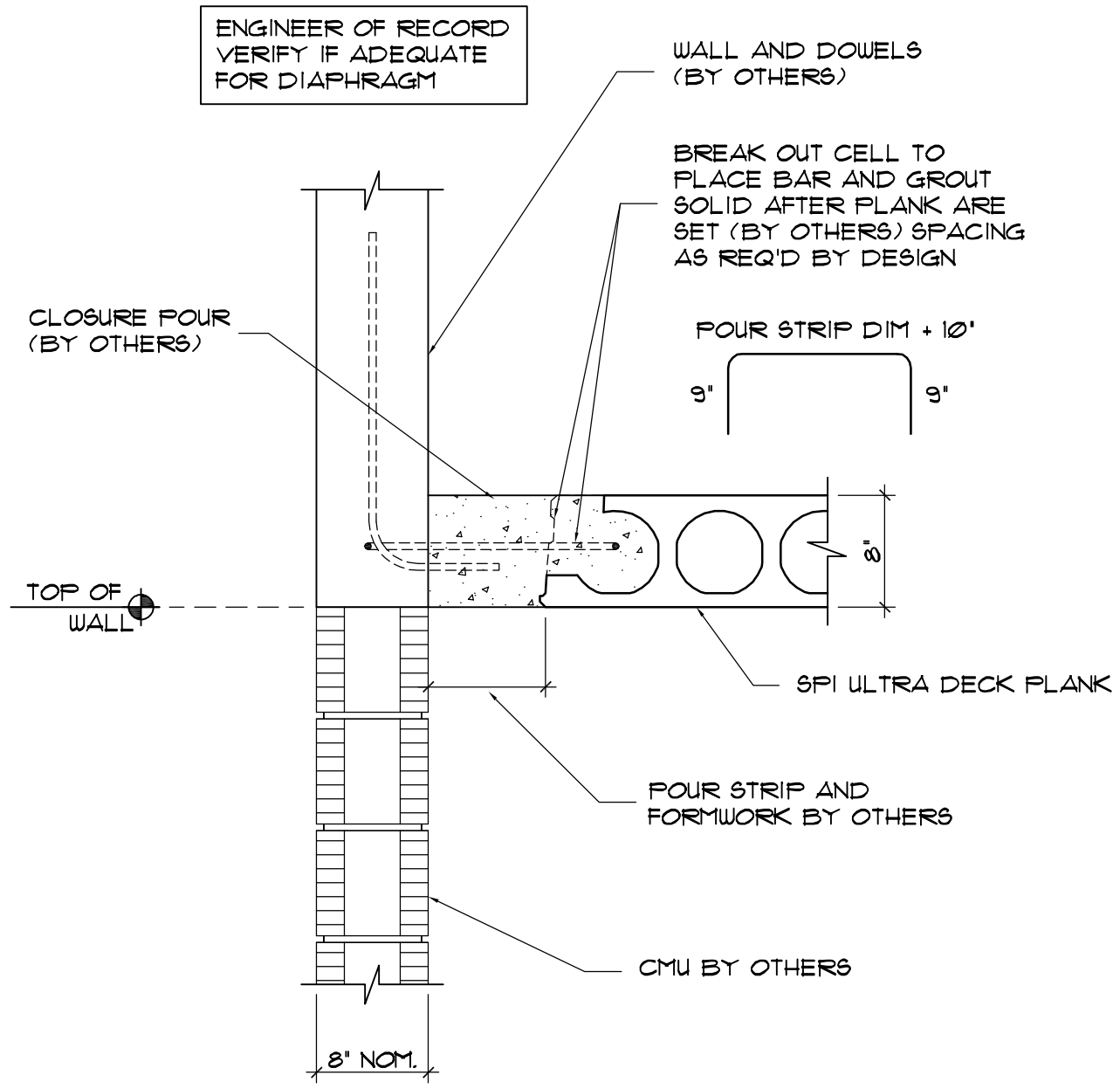
STANDARDS

CHK'D. BY: R. H.

DATE: 06-26-09

SHT. NO.

HC-12



PLANK • NON BEARING WALL w/ POUR STRIP

STANDARD ULTRA DECK HOLLOWCORE PLANK DETAIL

NO	REVISIONS	DATE



DRWG. BY: H. PEREZ	CHK'D. BY: R. H.
DATE: 06-26-09	DATE: 06-26-09
JOB NO. STANDARDS	SHT. NO. HC-13

ENGINEER OF RECORD
VERIFY IF ADEQUATE
FOR DIAPHRAGM

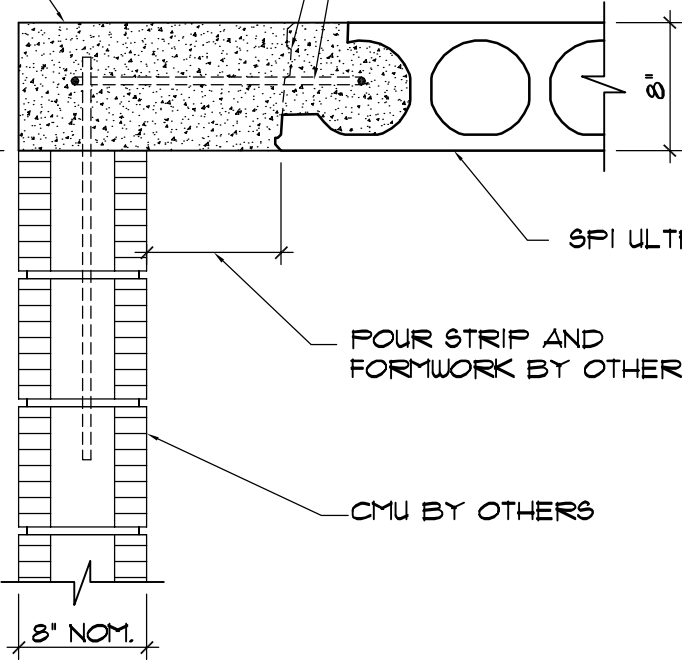
BREAK OUT CELL TO
PLACE BAR AND GROUT
SOLID AFTER PLANK ARE
SET (BY OTHERS) SPACING
AS REQ'D BY DESIGN

POUR STRIP DIM + 10"



CLOSURE POUR
BY OTHERS

TOP OF
WALL



SPI ULTRA DECK PLANK

POUR STRIP AND
FORMWORK BY OTHERS

CMU BY OTHERS

8' NOM.

PLANK • NON BEARING WALL w/ POUR STRIP

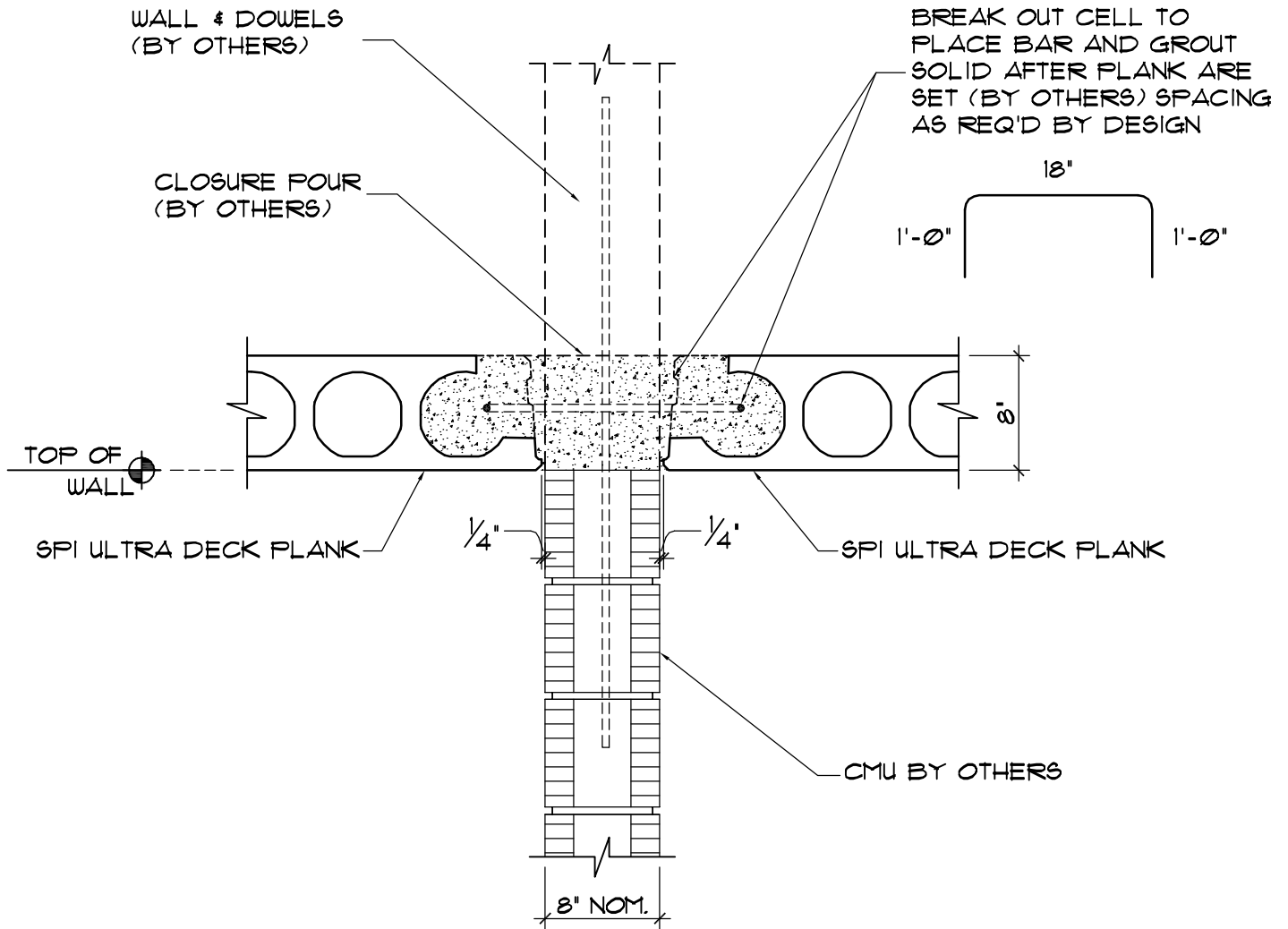
STANDARD ULTRA DECK HOLLOWCORE PLANK DETAIL

NO	REVISIONS	DATE



DRWG. BY: H. PEREZ	CHK'D. BY: R. H.
DATE: 06-26-09	DATE: 06-26-09
JOB NO. STANDARDS	SHT. NO. HC-14

ENGINEER OF RECORD VERIFY
IF ADEQUATE FOR DIAPHRAGM



PLANK • NON BEARING WALL w/ POUR STRIP

STANDARD ULTRA DECK HOLLOWCORE PLANK DETAIL

NO	REVISIONS	DATE

SPI STRUCTURAL
PRESTRESSED
INDUSTRIES,
INC.

DRWG. BY: H. PEREZ

DATE: 06-26-09

JOB NO.

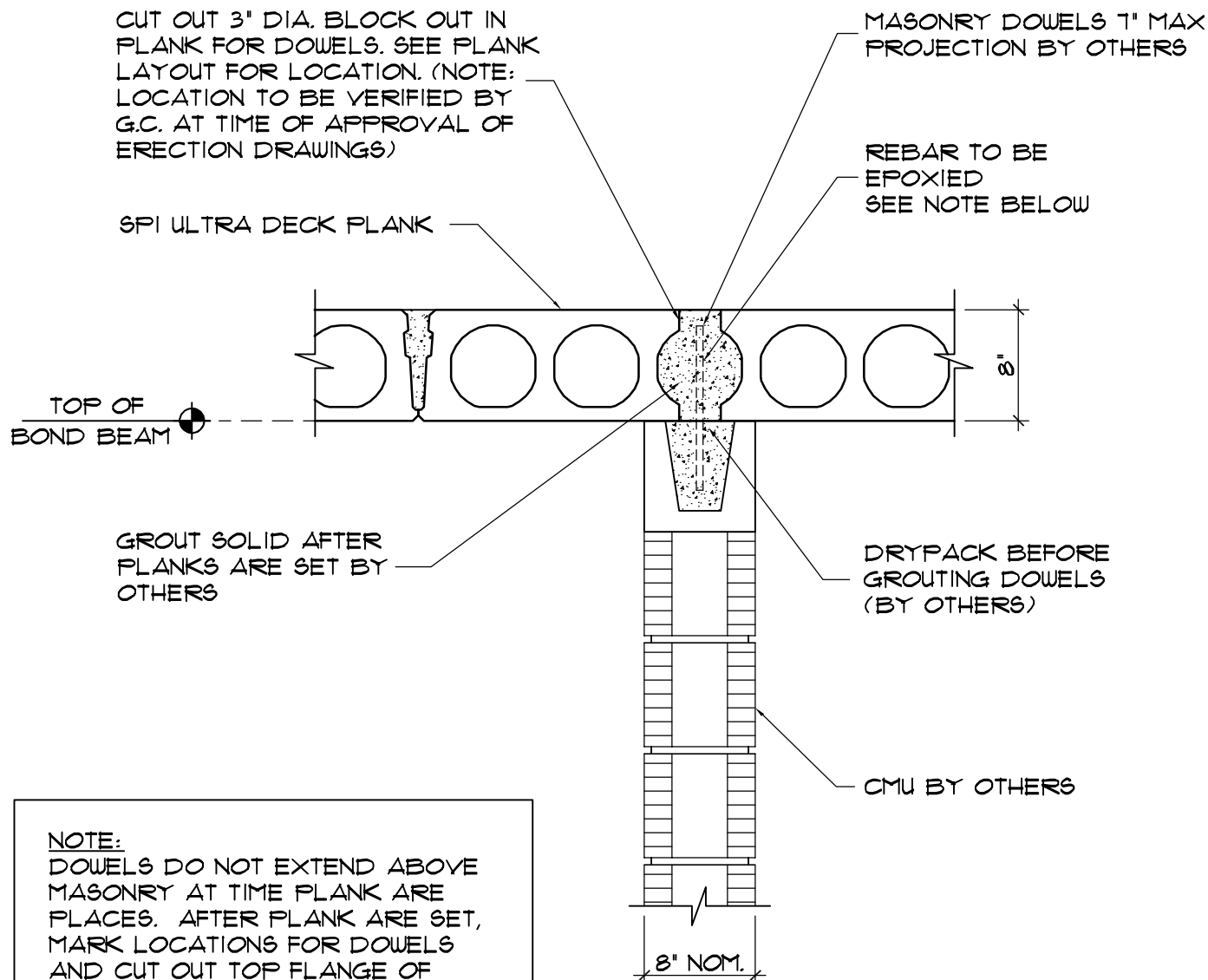
STANDARDS

CHK'D. BY: R. H.

DATE: 06-26-09

SHT. NO.

HC-15



NOTE:
 DOWELS DO NOT EXTEND ABOVE MASONRY AT TIME PLANK ARE PLACES. AFTER PLANK ARE SET, MARK LOCATIONS FOR DOWELS AND CUT OUT TOP FLANGE OF HOLLOWCORE DRILL THRU THE BOTTOM FLANGE A MIN. OF 6" INTO THE BOND BEAM. EPOXY DOWELS INTO BOND BEAM AND THEN GROUT AROUND DOWELS IN THE PLANK. THIS SYSTEM MUST BE APPROVED BY THE ENGINEER OF RECORD.

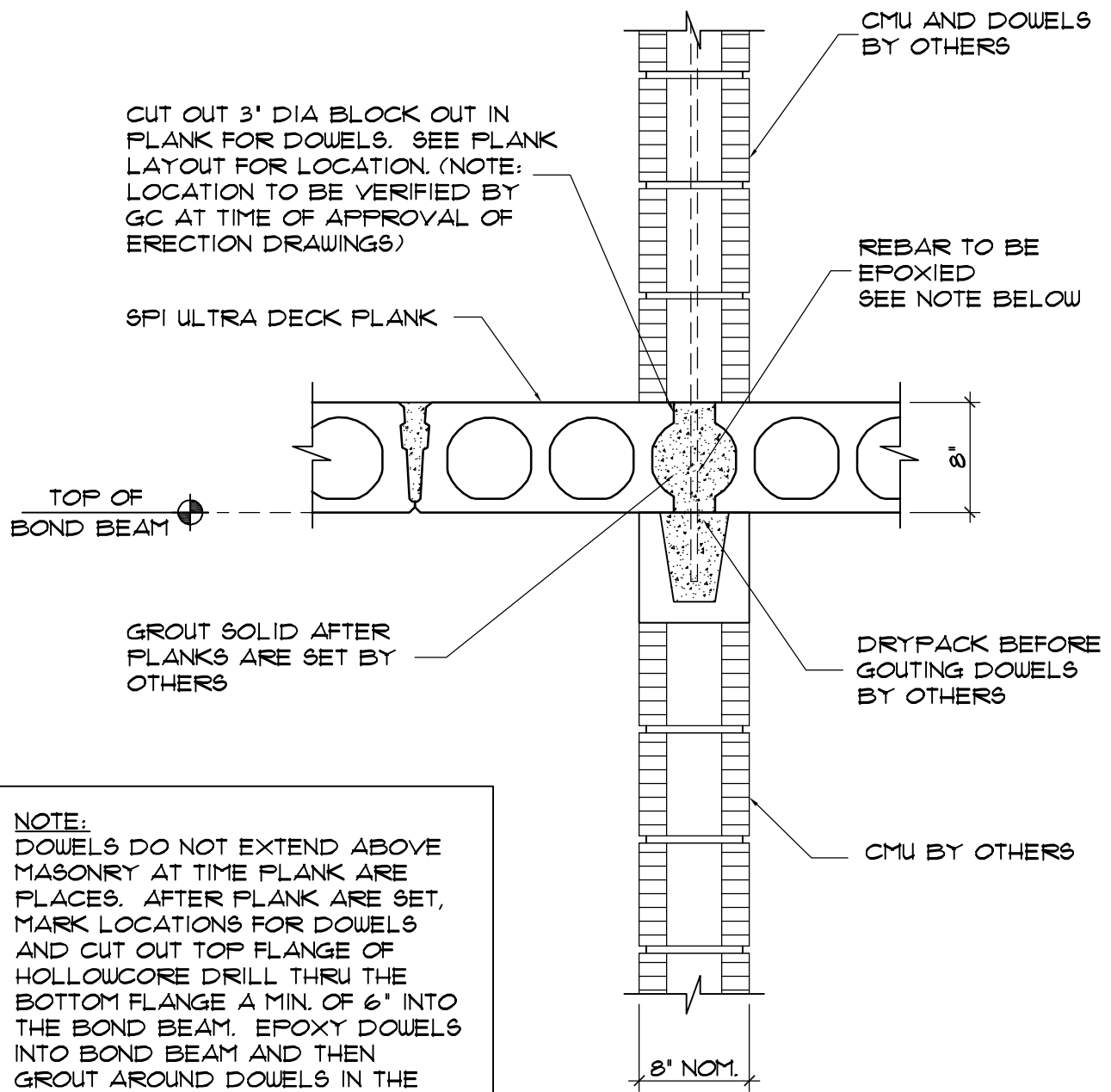
PLANK • NON-BEARING SHEARWALL

STANDARD ULTRA DECK HOLLOWCORE PLANK DETAIL

NO	REVISIONS	DATE



DRWG. BY: H. PEREZ	CHK'D. BY: R. H.
DATE: 06-26-09	DATE: 06-26-09
JOB NO. STANDARDS	SHT. NO. HC-17



NOTE:
 DOWELS DO NOT EXTEND ABOVE MASONRY AT TIME PLANK ARE PLACES. AFTER PLANK ARE SET, MARK LOCATIONS FOR DOWELS AND CUT OUT TOP FLANGE OF HOLLOWCORE DRILL THRU THE BOTTOM FLANGE A MIN. OF 6" INTO THE BOND BEAM. EPOXY DOWELS INTO BOND BEAM AND THEN GROUT AROUND DOWELS IN THE PLANK. THIS SYSTEM MUST BE APPROVED BY THE ENGINEER OF RECORD.

PLANK & NON-BEARING SHEARWALL

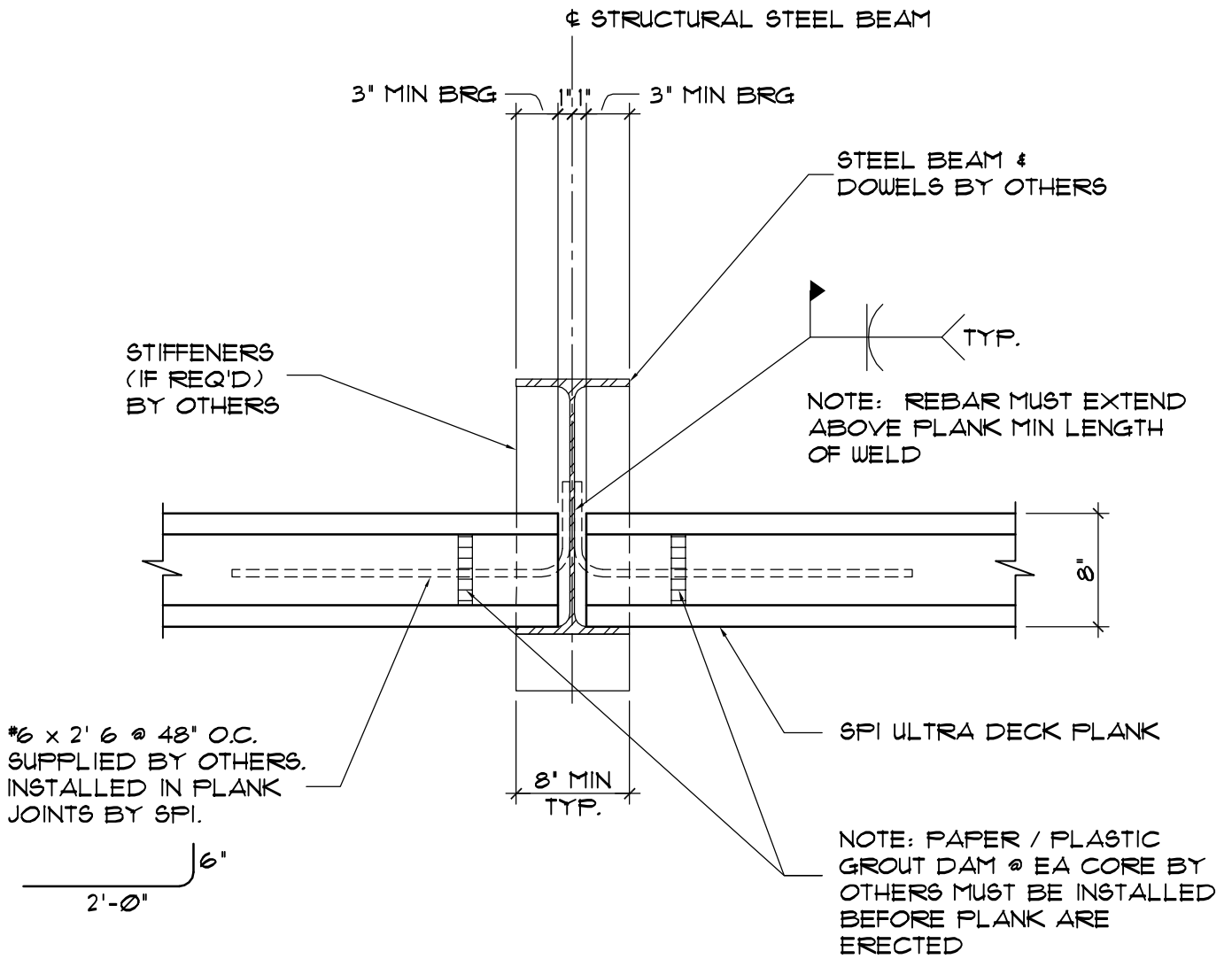
STANDARD ULTRA DECK HOLLOWCORE PLANK DETAIL

NO	REVISIONS	DATE


STRUCTURAL PRESTRESSED INDUSTRIES, INC.

DRWG. BY: H. PEREZ
 DATE: 06-26-09
 JOB NO. STANDARDS

CHK'D. BY: R.H.
 DATE: 06-26-09
 SHT. NO. **HC-18**



NOTES:
 MINIMUM BEARING WIDTH
 REQUIRED EACH SIDE = 3"
 MINIMUM BEAM FLANGE WIDTH =
 8" UNLESS OTHERWISE
 APPROVED

PLANK BEARING EACH SIDE OF STEEL BEAM

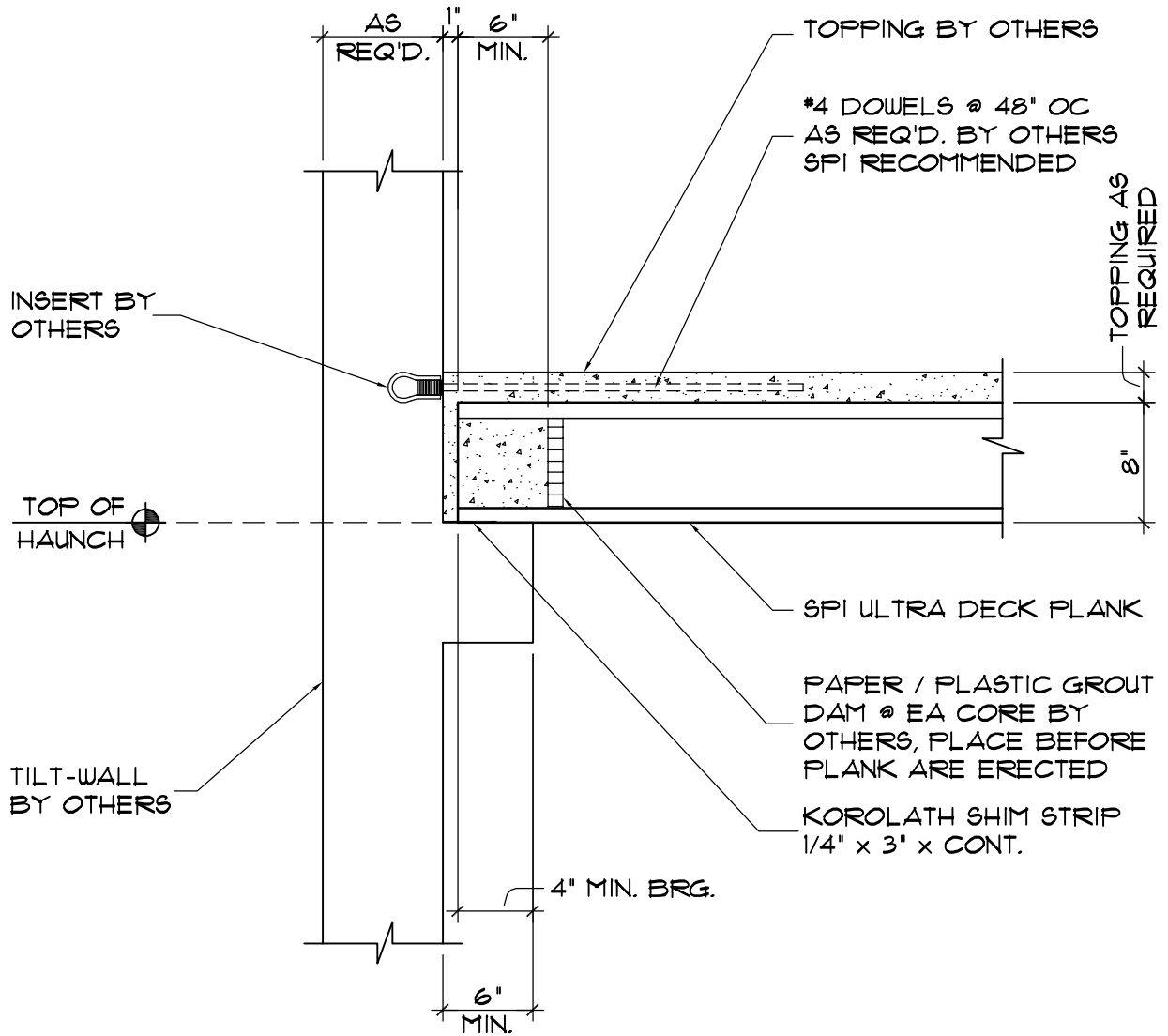
STANDARD ULTRA DECK HOLLOWCORE PLANK DETAIL

NO	REVISIONS	DATE



DRWG. BY: H. PEREZ	CHK'D. BY: R. H.
DATE: 06-26-09	DATE: 06-26-09
JOB NO. STANDARDS	SHT. NO. HC-19

ENGINEER OF RECORD
VERIFY IF ADEQUATE FOR
DIAPHRAGM



PLANK BRG. ON TILT-WALL HAUNCH AT FLOOR

STANDARD ULTRA DECK HOLLOWCORE PLANK DETAIL

NO	REVISIONS	DATE

SPI STRUCTURAL
PRESTRESSED
INDUSTRIES,
INC.

DRWG. BY: H. PEREZ

DATE: 06-26-09

JOB NO.

STANDARDS

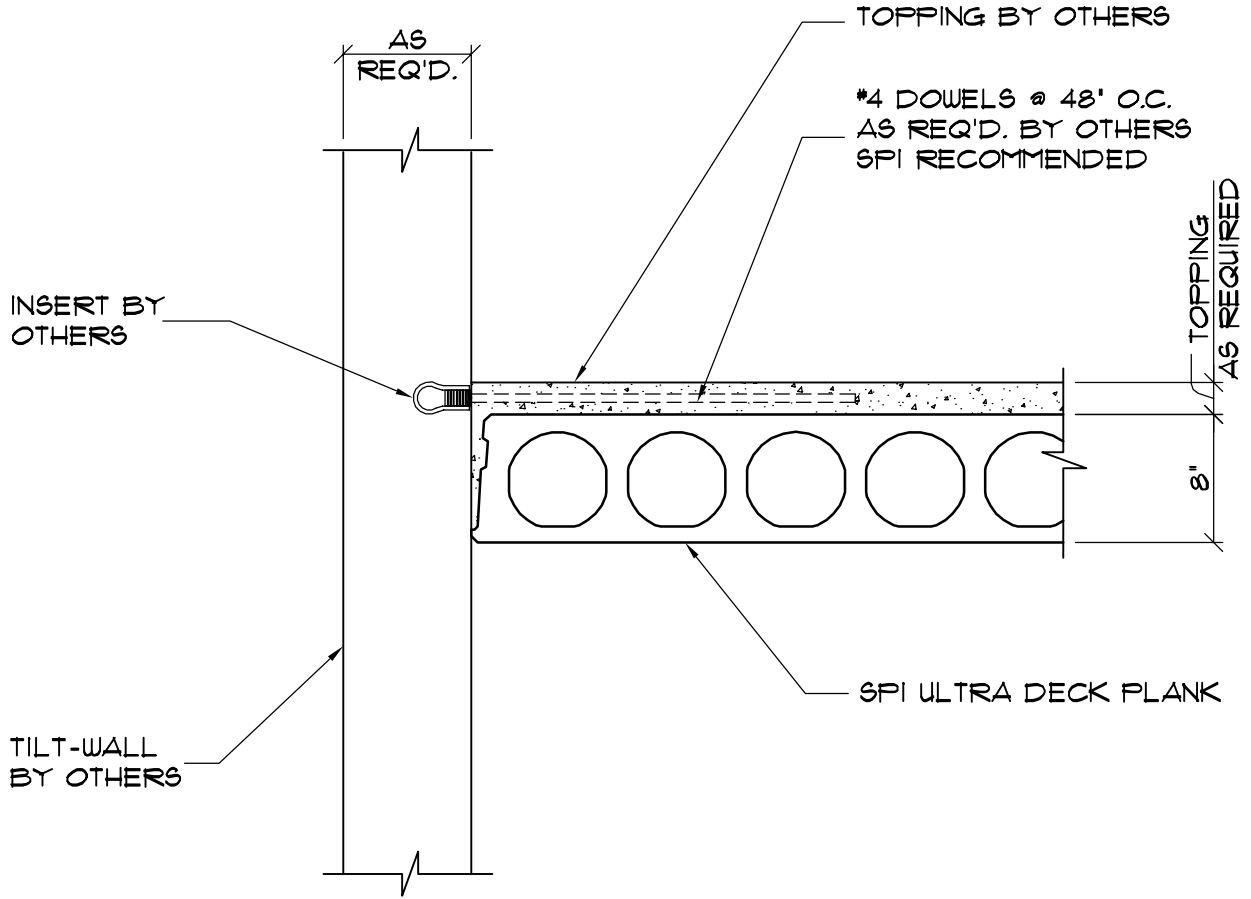
CHK'D. BY: R. H.

DATE: 06-26-09

SHT. NO.

HC-20

ENGINEER OF RECORD
 VERIFY IF ADEQUATE FOR
 DIAPHRAGM



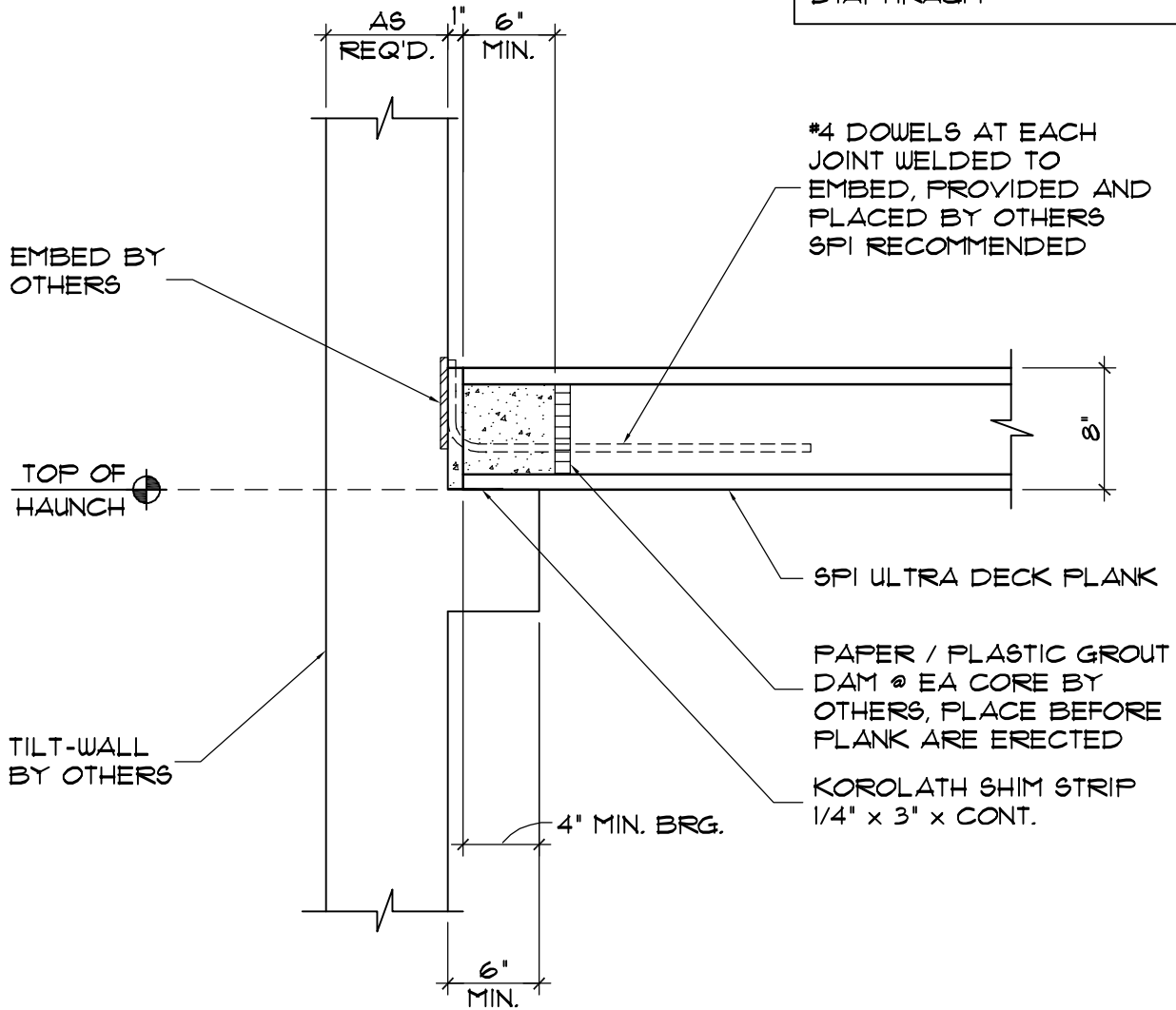
PLANK CONNECTING TO TILT-WALL AT FLOOR
STANDARD ULTRA DECK HOLLOWCORE PLANK DETAIL

NO	REVISIONS	DATE



DRWG. BY: H. PEREZ	CHK'D. BY: R. H.
DATE: 06-26-09	DATE: 06-26-09
JOB NO. STANDARDS	SHT. NO. HC-21

ENGINEER OF RECORD
VERIFY IF ADEQUATE FOR
DIAPHRAGM



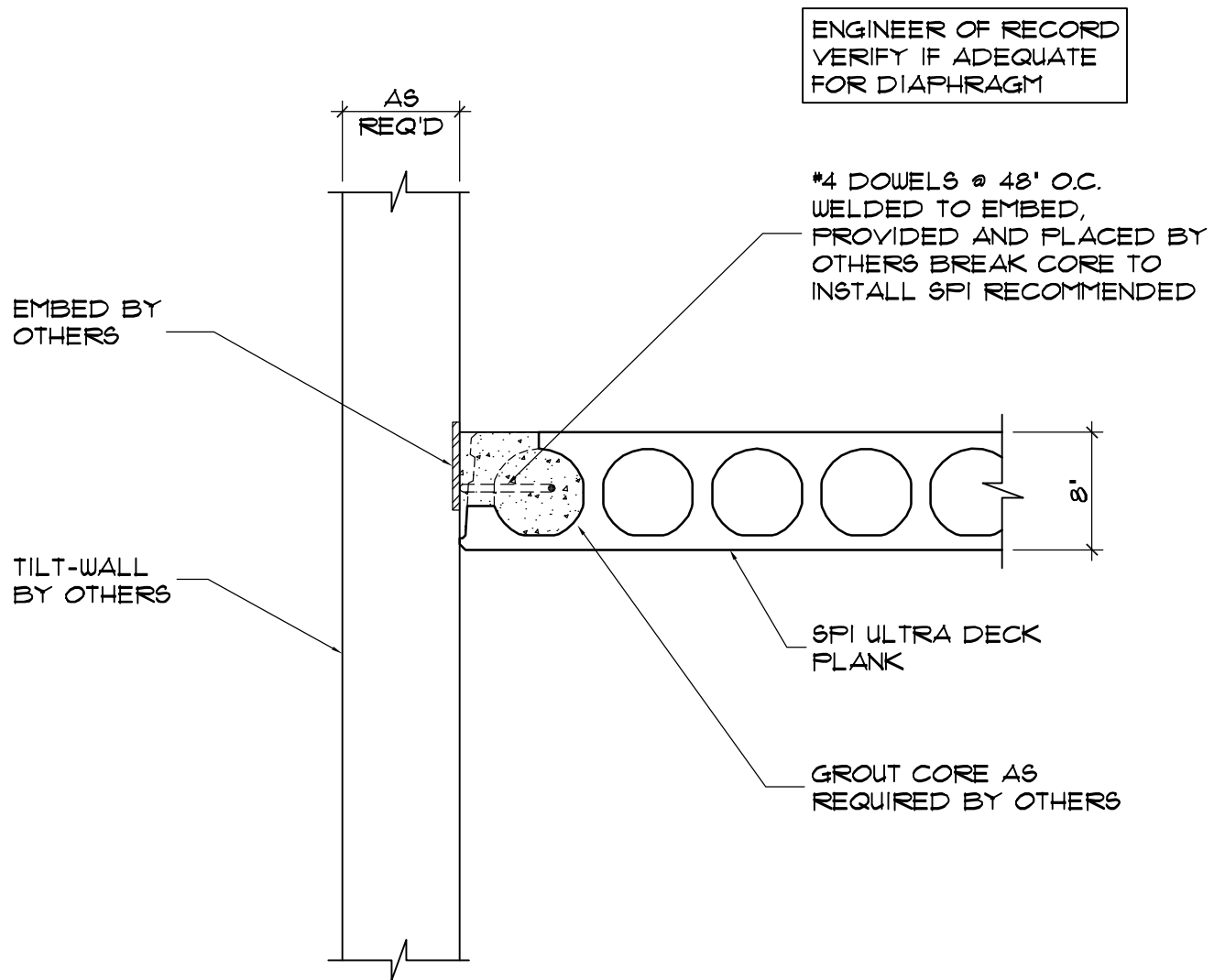
PLANK BRG ON TILT-WALL HAUNCH AT ROOF

STANDARD ULTRA DECK HOLLOWCORE PLANK DETAIL

NO	REVISIONS	DATE



DRWG. BY: H. PEREZ	CHK'D. BY: R. H.
DATE: 06-26-09	DATE: 06-26-09
JOB NO. STANDARDS	SHT. NO. HC-22



PLANK AT P/C WALL AT ROOF

STANDARD ULTRA DECK HOLLOWCORE PLANK DETAIL

NO	REVISIONS	DATE



STRUCTURAL
PRESTRESSED
INDUSTRIES,
INC.

DRWG. BY: H. PEREZ

DATE: 06-26-09

JOB NO.

STANDARDS

CHK'D. BY: R. H.

DATE: 06-26-09

SHT. NO.

HC-23

#4 DOWEL DRILLED AND GROUTED
AFTER ERECTION BY OTHERS (IF
CONNECTION IS REQUIRED)

#4 CANT. REINF. AS REQ'D.
(FILL CORE SOLID)

CORES FILLED WITH
INSULATION OVER
EXTERIOR WALL BY
OTHERS

1" CLR

2"

VARIES

4'-0" MAX. FOR 8" PLANK
6'-0" MAX. FOR 10" PLANK

1/8" x 3" KOROLATH
BRG. PAD BY S.P.I

FILL TOP COURSE
SOLID BY OTHERS

CANTILEVER (BALCONIES)

STANDARD ULTRA DECK HOLLOWCORE PLANK DETAIL

NO	REVISIONS	DATE



STRUCTURAL
PRESTRESSED
INDUSTRIES,
INC.

DRWG. BY: H. PEREZ

DATE: 06-26-09

JOB NO.

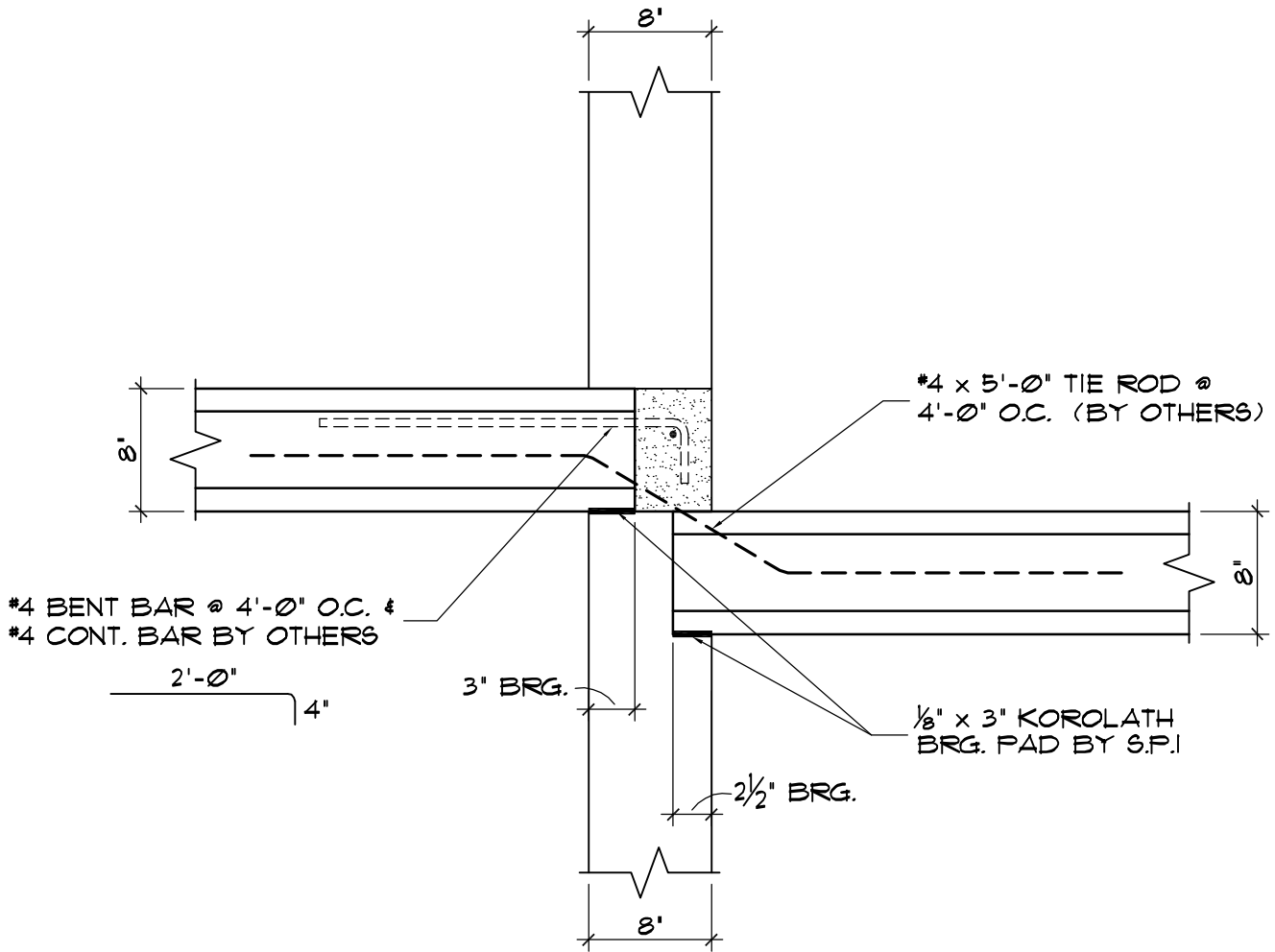
STANDARDS

CHK'D. BY: R.H.

DATE: 06-26-09

SHT. NO.

HC-25



INT. BRG. WALL WITH 8 IN. STEP DOWN AT TYP FLR

STANDARD ULTRA DECK HOLLOWCORE PLANK DETAIL

NO	REVISIONS	DATE



DRWG. BY: H. PEREZ

DATE: 06-26-09

JOB NO.

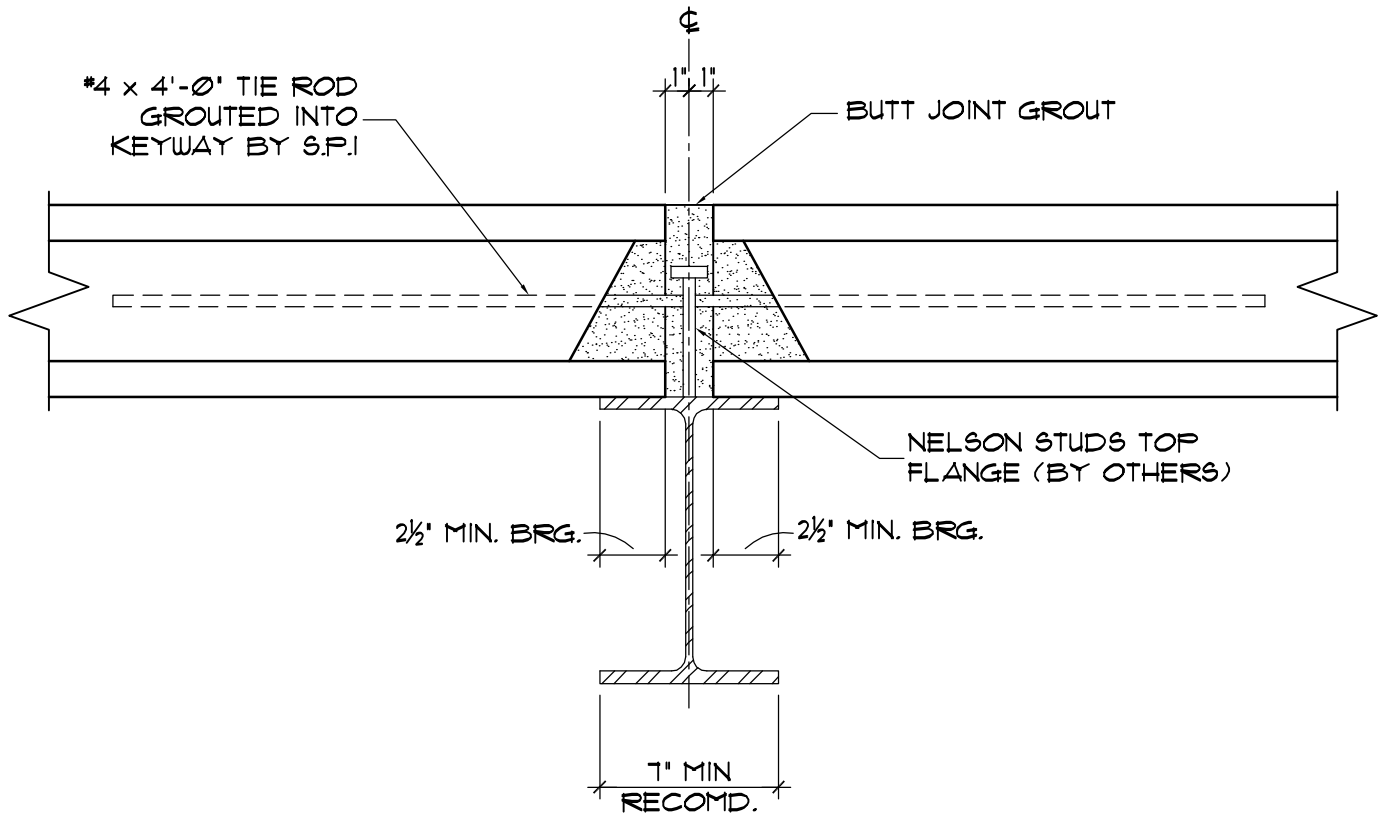
STANDARDS

CHK'D. BY: R.H.

DATE: 06-26-09

SHT. NO.

HC-26



INTERIOR BEARING ON STEEL

STANDARD ULTRA DECK HOLLOWCORE PLANK DETAIL

NO	REVISIONS	DATE

SPI STRUCTURAL
 PRESTRESSED
 INDUSTRIES,
 INC.

DRWG. BY: H. PEREZ

DATE: 06-26-09

JOB NO.

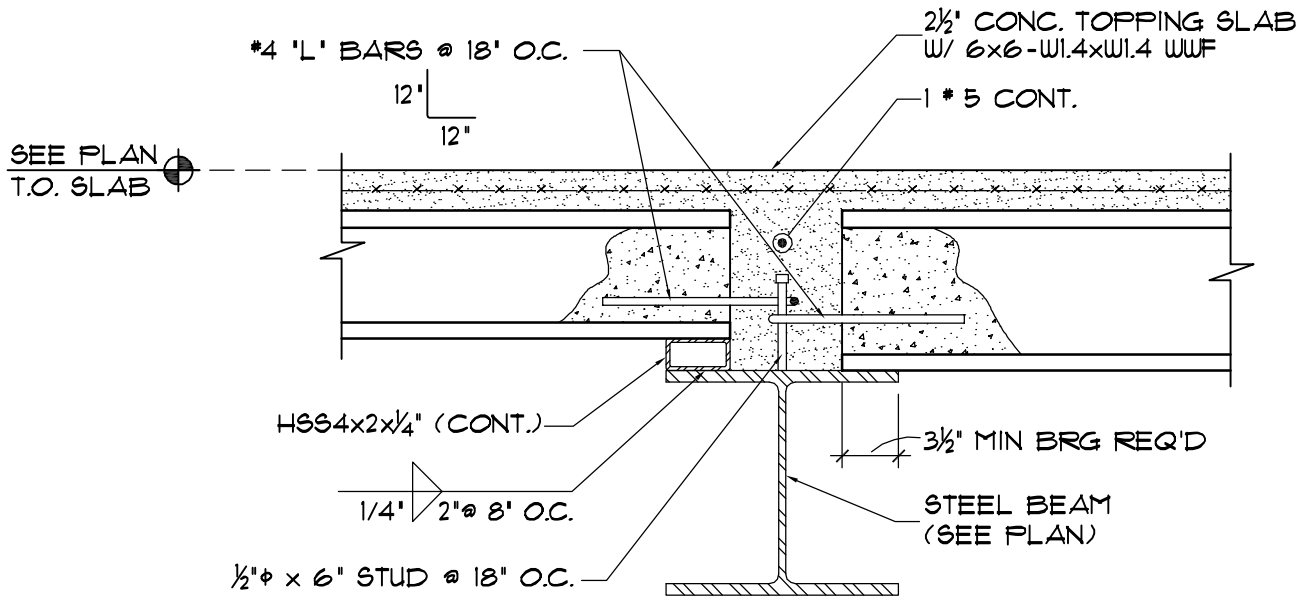
STANDARDS

CHK'D. BY: R. H.

DATE: 06-26-09

SHT. NO.

HC-27



PLANK BEARING EACH SIDE OF STEEL BEAM

STANDARD ULTRA DECK HOLLOWCORE PLANK DETAIL

NO	REVISIONS	DATE



DRWG. BY: H. PEREZ

DATE: 06-26-09

JOB NO.

STANDARDS

CHK'D. BY: R.H.

DATE: 06-26-09

SHT. NO.

HC-30